

**FOR IMMEDIATE RELEASE**

April 15, 2025



**PRESS CONTACTS**

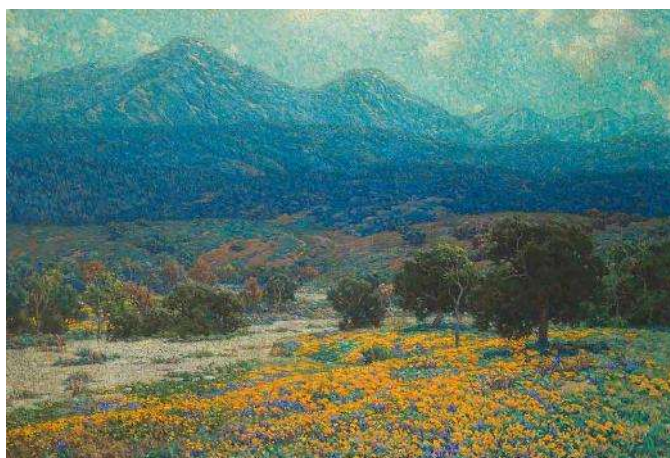
Erin Bird

O: 720-865-3552

[erin.bird@botanicgardens.org](mailto:erin.bird@botanicgardens.org)

**Blue Grass, Green Skies: American Impressionism and Realism  
from the Los Angeles County Museum of Art  
June 7 – September 14, 2025**

**SAVE THE DATE:** Press Preview on Wednesday, June 4, 10 a.m.



*Blue Grass, Green Skies: American Impressionism and Realism from the Los Angeles County Museum of Art* presents the idyllic landscapes, urban scenes and intimate interiors of 19th century American Impressionist and Realist painting. Inspired by French artists who founded the Impressionism movement in Europe, American artists adapted their glowing colors and fluid brushstrokes to explore the fleeting effects of light and atmosphere. The exhibition is on view June 7 – September 14, 2025, in the Freyer – Newman Center and is included with admission to Denver Botanic Gardens.

*Blue Grass, Green Skies* presents 17 paintings by artists Mary Cassatt, Childe Hassam, Ernest Lawson, John Henry Twachtman and William Wendt, among others. Paintings depict American landscapes like California mountains and wildflower fields, Maine coves and East Coast cityscapes.

Connections between Impressionism and the Garden Movement in the United States are highlighted in the gallery and in the gardens. Impressionism arrived in the U.S. from Europe in the late 19th and early 20th centuries, around the same time that gardening was becoming a national obsession. Giant frames sited throughout the Gardens highlight landscape vignettes.

Large print and braille exhibition text are included in the gallery and audio descriptions of artworks are available. A pop-up shop in the adjacent gallery stocks a collection of Impressionism-inspired items.

*Blue Grass, Green Skies* was curated by Leah Lembeck, department head, European Painting & Sculpture and American Art, at the Los Angeles County Museum of Art. The exhibition is organized by the Los Angeles County Museum of Art and generous support for this project was provided by Art Bridges. It was previously shown at the Utah Museum of Fine Arts, Salt Lake City, UT, and the New Britain Museum of American Art, New Britain, CT.

## RELATED PROGRAMS

### [Art at the Gardens Tour](#)

Select dates and times

\$20, \$12 member, \$10 student

Walk through the galleries with a guide who shares stories about the work on display.

### [A Brush with American Impressionism Tour](#)

Various dates, 11 a.m. - noon

\$20, \$12 member, \$10 student

Step into a world of color and light on this indoor gallery tour of *Blue Grass Green Skies*. Through interactive activities, learn about the works on view as well as the history of gardening in America and how these artists transformed the way we see the world around us.

### [Impressionism-Inspired Painting in the Gardens](#)

June 21, July 26, Aug. 3, Sept. 7, 9:30 a.m. – 12:30 p.m.

\$60, \$50 member

Take inspiration from the exhibition *Blue Grass, Green Skies*, then head outside to paint en plein air. Learn beginning watercolor techniques to help you translate the light, shadow and lush surroundings of the Monet Pool into your own Impressionist masterpiece. All skill levels welcome; some supplies included.

### [Curator Conversations Tour](#)

Thursday, June 12, 10-11 a.m.

\$22, \$15 member, \$10 student

Join us for a stroll through current art exhibitions in the Freyer – Newman Center galleries with a curatorial staff member.

### **Curator's Lecture: American Impressionism with Dr. Shannon Vittoria**

Thursday, June 26, 6:30-8 p.m. | [Onsite](#) and [Online](#)

\$25, \$20 member

Dr. Shannon Vittoria, associate curator of American art at the Los Angeles County Museum of Art contextualizes the rise of Impressionism and Realism in the United States--from the urban centers of the northeast to California's coastline.

### **Lecture with Anna Marley: The Artist's Garden, American Impressionism and the Garden Movement**

Wednesday, July 16, 6:30-8 p.m. | [Onsite](#) and [Online](#)

\$25, \$20 member

Anna Marley, director of curatorial affairs at the Toledo Museum of Art, presents an illustrated lecture about the intertwined stories of American artists, Impressionism and the growing popularity of gardening as a middle-class leisure pursuit at the turn of the 20th century.

### **Lecture with Marta McDowell: Cultivation and Canvases, Gardening and American Impressionism**

Thursday, Sept. 11, 6:30-8 p.m. | [Onsite](#) and [Online](#)

\$25, \$20 member

New York Botanical Garden instructor and historian Marta McDowell speaks about the intersection of art and flower cultivation at the turn of the 20th century. Learn how landscape history, horticulture and art converged in the vibrant movement we now call American Impressionism.

### [American Impressionism: Garden to Gallery](#)

Various days and dates, 5:30-7 p.m.

\$40, \$30 member, \$10 student

This tour begins in the gardens, where nature's awe-inspiring colors, textures and lines set the stage before moving into the Freyer – Newman Center art galleries. In the gallery, guides connect the natural elements seen outside with the scenes captured by American Impressionist artists in the paintings on view.

**Images: Left:** Mary Cassatt, "Woman and Child," oil on canvas, late 19th or early 20th century. 28-3/4" H x 23-5/8" W. Los Angeles County Museum of Art. Gift of Deborah and John Landis. **Right:** Granville Redmond, "California Poppy Field," oil on canvas, ca. 1926. 40 1/4" H x 60 1/4" W. Los Angeles County Museum of Art. Gift of Raymond Griffith.

###

**About Denver Botanic Gardens:** Green inside and out, Denver Botanic Gardens was founded in 1951 and is considered one of the top botanical gardens in the United States and a pioneer in water conservation. Accredited by the American Alliance of Museums, the Gardens has a robust living plant collection, natural history collection and art collection along with temporary art exhibitions. The Gardens is a dynamic, 24-acre urban oasis in the heart of the city, offering unforgettable opportunities to flourish with unique garden experiences for the whole family – as well as world-class art exhibitions and education programs in the Freyer – Newman Center, plant conservation efforts and horticultural research. Additional sites extend this experience throughout the Front Range: Denver Botanic Gardens Chatfield Farms is a 700-acre native plant refuge with an active farm in Jefferson County; Mount Goliath is a high-altitude trail and interpretive site on the Mount Blue Sky Scenic Byway. The Gardens also manages programming at Plains Conservation Center in Aurora. For more information, visit us online at [www.botanicgardens.org](http://www.botanicgardens.org).